

this is

MEDLINK

Yumeng Sun

Matt Hughes

Margo Geppert

Sarah Lagpacan

Alyssa Saltzman

Vince DeStefano

Alexander Wooledge

Maria Walliser-Wejebe





eight

hospitals

seven

health sciences colleges

one

campus

this is

COLLEGE OF FERRIS

MED CAMPUS



Flat,
blank
wall

Underutilized
sidewalks

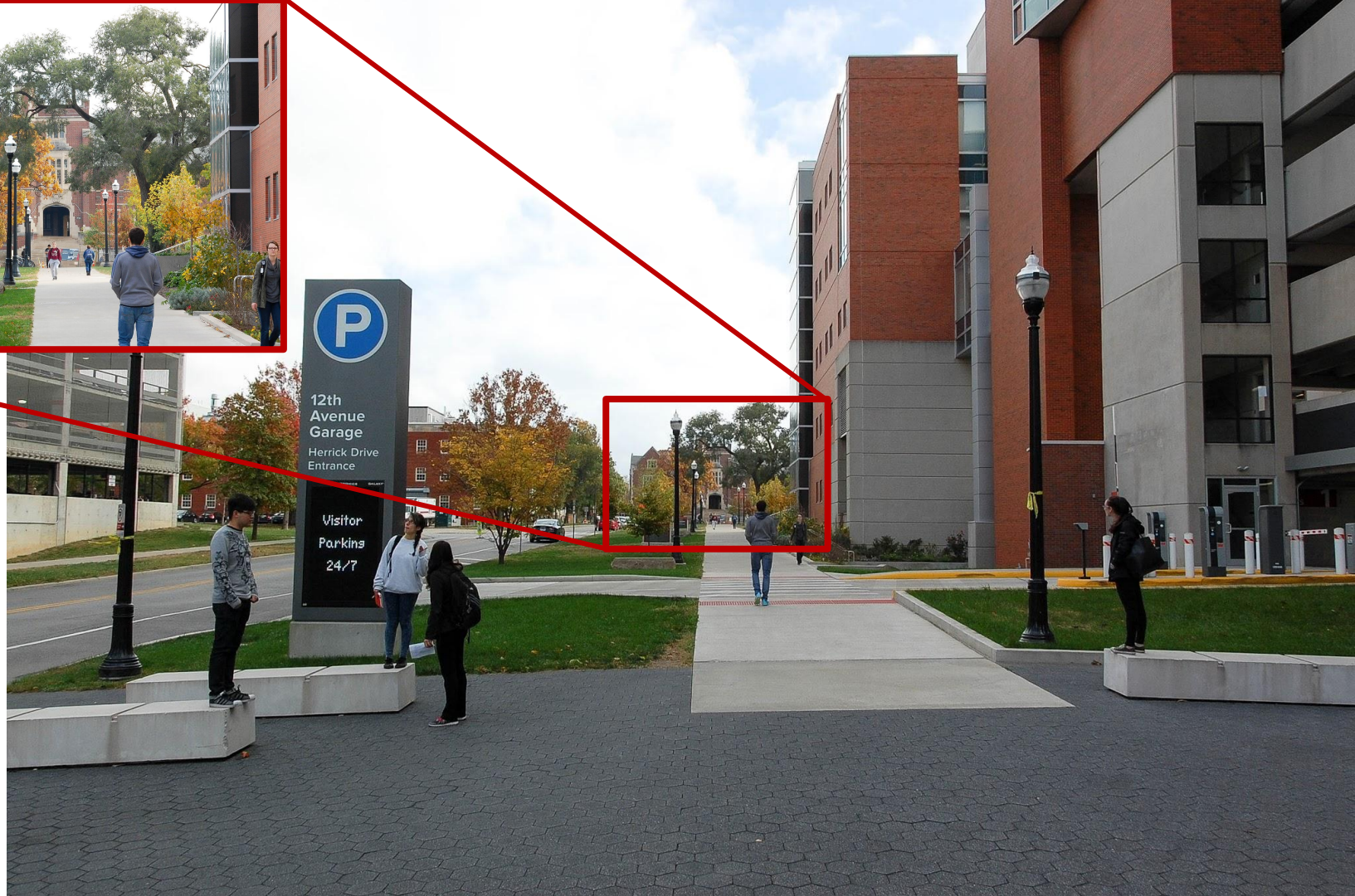


Potential
public open
space



Bricked-up
windows
that create
a desolate
sense of
place





Termination
viewpoint of
historic
campus
structure
flanked on
sides by
parking
garages

Large
disorganized
lot that is
prohibitive to
pedestrians



Underutilized
open space
flanked by
blank walls

Has potential
of being a
gateway to
the Ohio
Stadium



High speed
roadway
that is non
conductive
to
pedestrians

Dirt paths
from
pedestrian
utilization of
the open
space



Cannon
Drive
functions as
a commuter
road for
highway
access



Olentangy
River

Polo Lot
South, which
has 1,101
parking
spaces for
staff*



*from OSU GIS campus mapping tool

Bicycle
parking is
provided in
landscaped
areas



Very little
greenery
and a lot of
pavement



The James
provides an
excellent
wayfinding
point

Open green
space



Well-designed public play equipment for children

Underutilized due to location of adjacent adult healthcare



Beautiful
green
space
and plaza



Chlois G. Ingram

Spirit of Women Park

Green space
is surrounded
by parking
structures
and wide
roads



Bike sharing
is available
south of the
hospitals

Location of
bike share
may not be in
the most
efficient area



Retail
corridor on
Neil Avenue
provides
an informal
space for
people at
Med
Campus

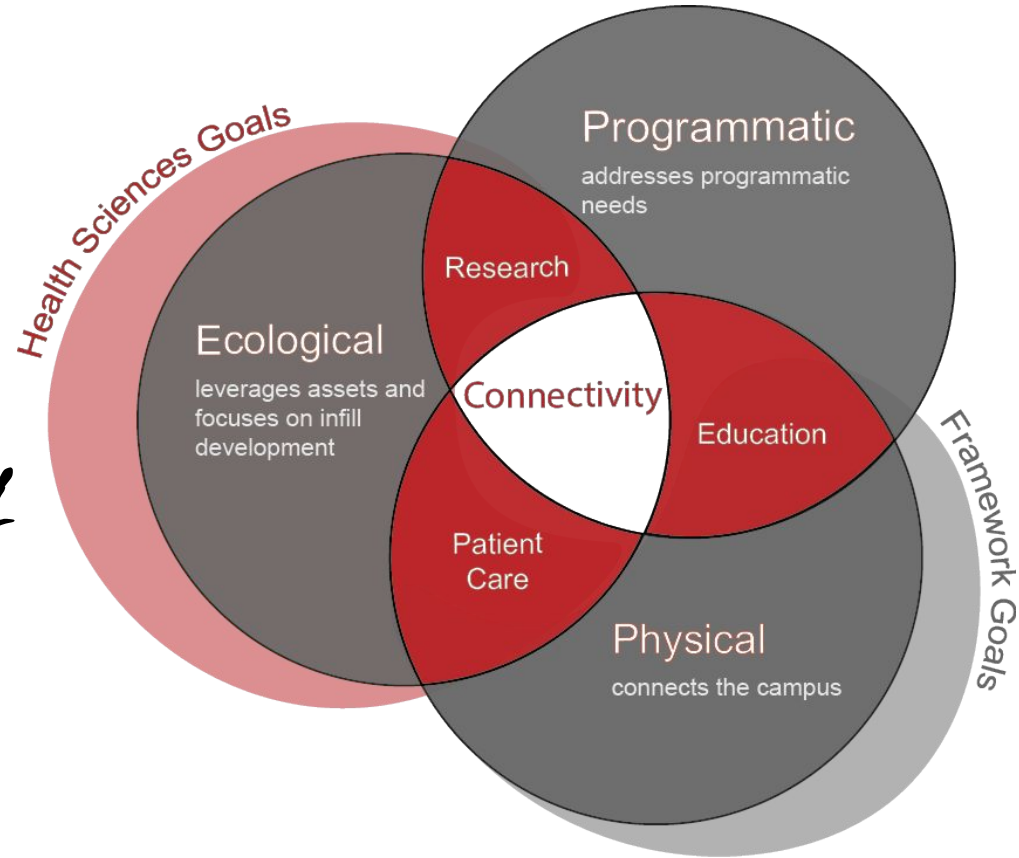


Framework Goals

+

Health Sciences Goals =

connectivity

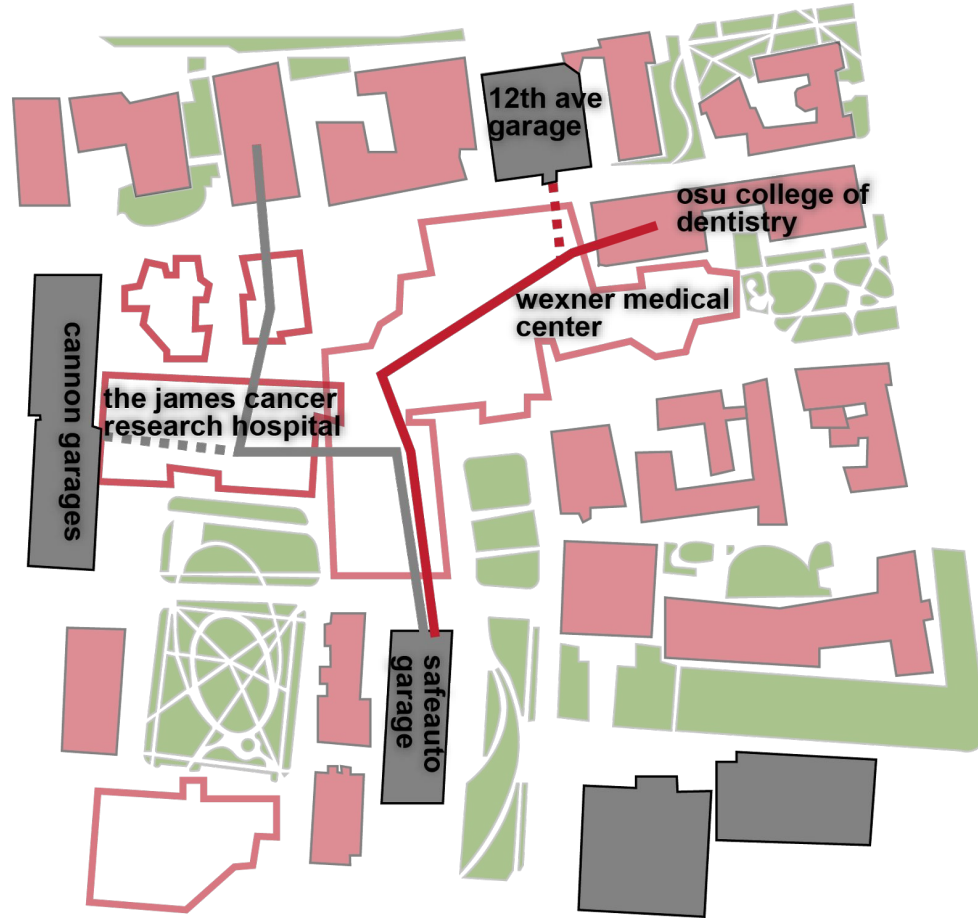




Linking you through
Med Campus

*what is
MedLink?*

Network of two paths, **Scarlet & Gray**, comparable to the Interstate Highways with main destinations and intermediate stopping points defined by Buckeye imagery.





branding / wayfinding

Branding

Building designations
through murals and
entryway nameplates

Wayfinding

Redesign of open/green
space oriented towards
path connection

branding / wayfinding

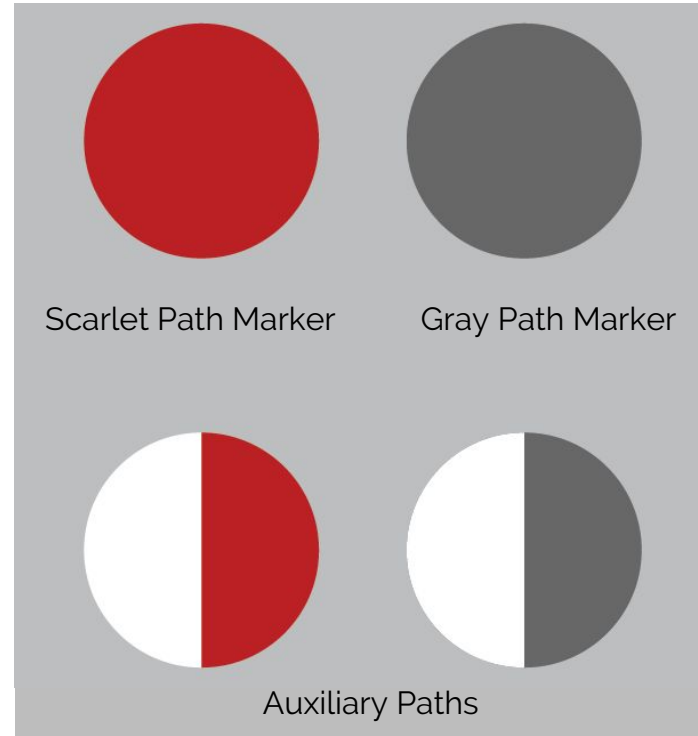
Elevator markers

Path wall stickers

Safe textured floor

Buckeyes for points of reference

Public art and murals



Buckeye point of reference

Scarlet wayfinding dots



the hubs

The hubs are comparable to highway exits

They would be located from the **Biomedical Research Tower** to **the James** to **10th Avenue** and from the **OSU College of Dentistry** to **Neil/12th Avenues**

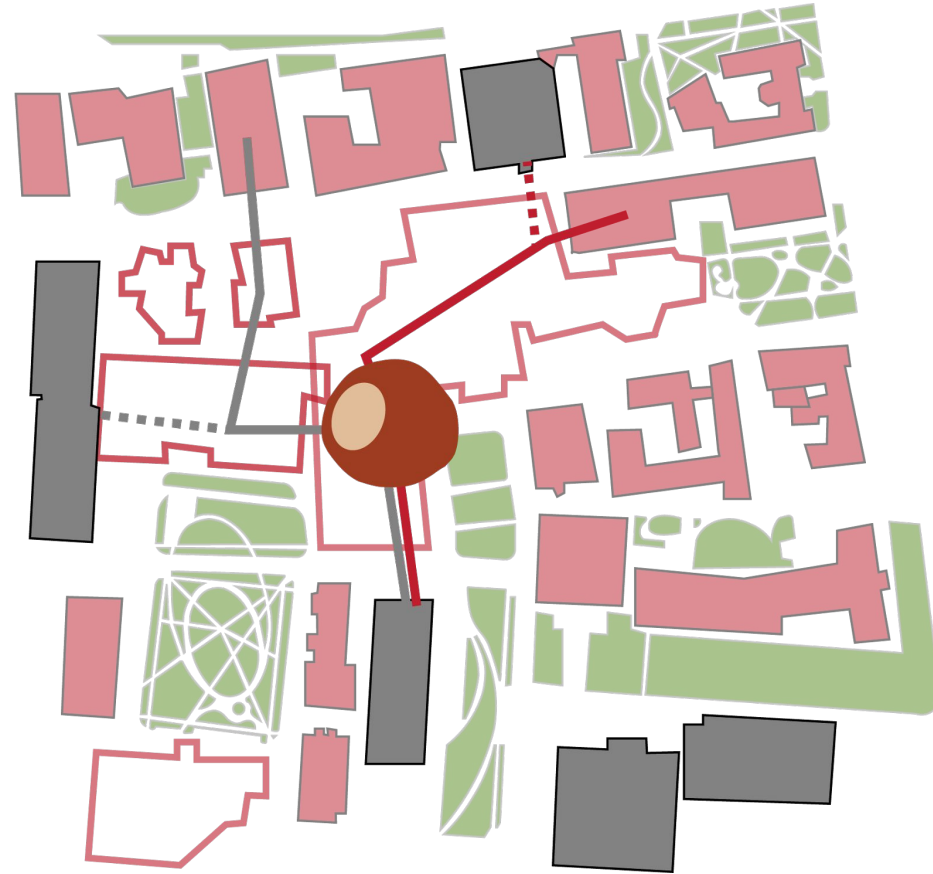
Minor hubs would be located at the **12th Avenue** and **Cannon Drive Garages**



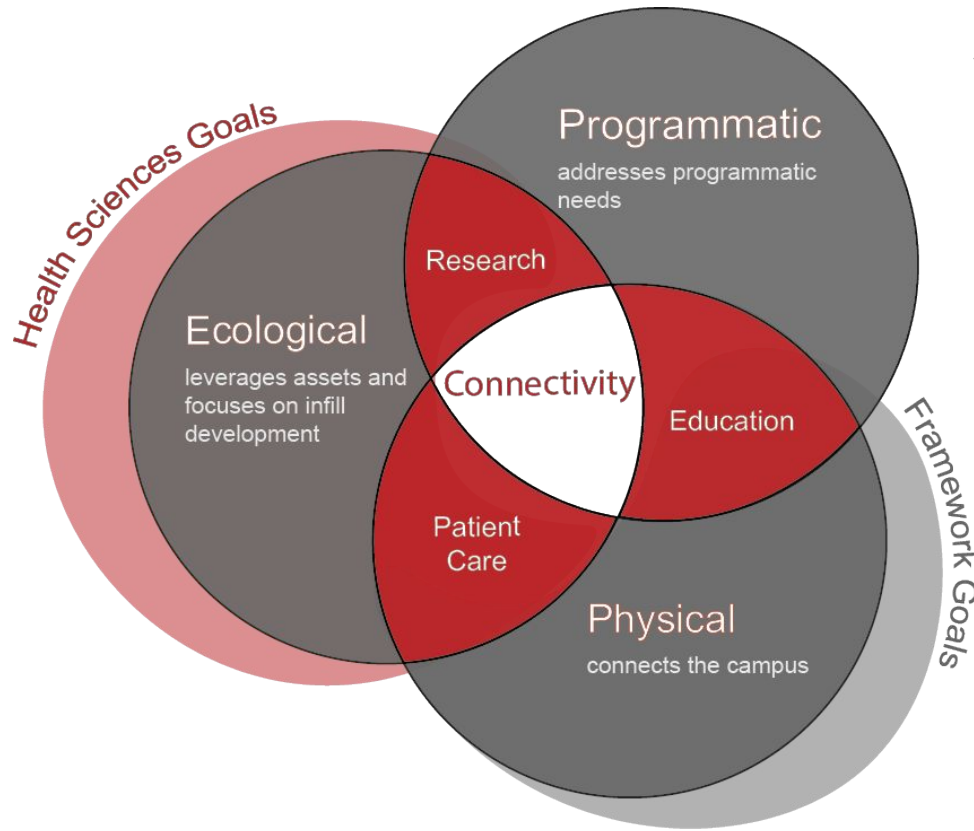
the main directory

- ✗ Serves as a
Central Point of
the Med Center

Creates a unified public
realm for the network



MedLink objectives



MedLink provides tangible connections between:

- Research labs
- Classrooms
- Green spaces

simplifying trips through the hospital network.

Analysis of Existing Conditions and Framework Plans

Identifying where the Framework plans have not yet been successful via walk-through experience

Med Campus lacks physical connections, and this negatively impacts all types of connectivity

Development of Guiding Principles

Pinpointing what the Health Sciences district is striving for and how it is going to get there

- ✗ Ecological, Programmatic, and Physical Connectivity
- ✗ Research, Education, and Patient Care

the solution:





this is a *connected*
MED CAMPUS